

**24**  
HOURS  
7 DAYS A WEEK



# 600KW

## Packaged Boiler Plant

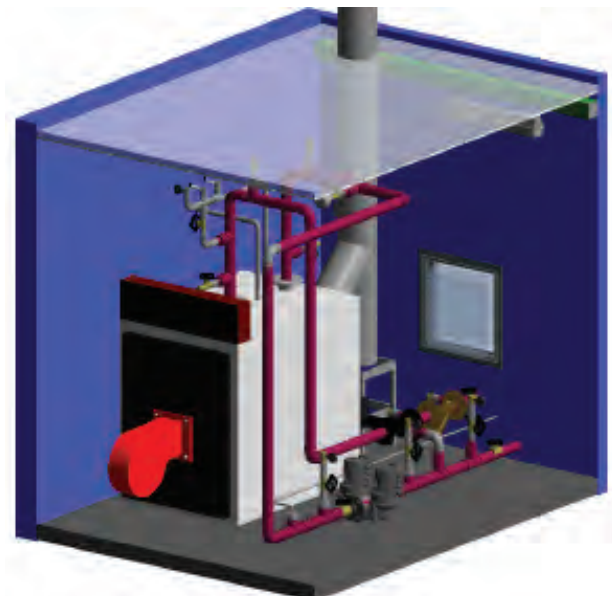
Specification Sheet



# 600KW

## Packaged Boiler Plant

Specification Sheet



<b>Maximum Output:</b>	600kW Gas or Oil
<b>Boiler:</b>	Viessman
<b>Burner:</b>	Oil: Riello RL50 Gas: RS50
<b>Pumps:</b>	tpd 60-240/2 (twin bed) fixed speed
<b>Temperature Range:</b>	60-90°C
<b>LTHW Connections:</b>	DN100
<b>Electrical:</b>	63 amp 3 phase
<b>Gas Connection:</b>	50mm
<b>Water Connection:</b>	15mm
<b>Flow Rate:</b>	11.90kg/s and 70kPA
<b>Dimensions (LxWxH):</b>	3030 x 2428 x 2599mm
<b>Weight:</b>	3.5 tonnes (approx.)
<b>Pressurisation Plant:</b>	Included
<b>Telemetry:</b>	Trend IQ3 controller with GSM modem reporting
<b>Variable Temperature:</b>	Yes
<b>Noise:</b>	72 dBA
<b>Handling Options:</b>	HIAB
<b>HWS Connection:</b>	DN40
<b>HWS Flow Rate:</b>	1 Kg/s
<b>Max HWS Temperature:</b>	60°C
<b>Maximum Static:</b>	3Bar – max system volume 1500 litres (200 litre expansion vessel included)
<b>CWS Connection:</b>	DN40

Bespoke options are available - call us today!