

24
HOURS
7 DAYS A WEEK



750KW Packaged Boiler Plant

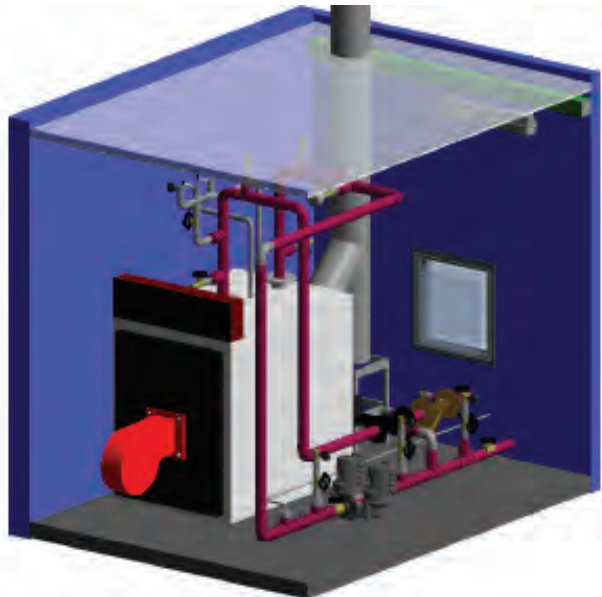
Specification Sheet



750KW

Packaged Boiler Plant

Specification Sheet



Maximum Output:	750kW Gas or Oil
Boiler:	Viessman
Burner:	Oil: Riello RL100 Gas: RS100
Pumps:	tpd 60-240/2 (twin head) fixed speed
Temperature Range:	60-90°C
LTHW Connections:	DN100
Electrical:	32 amp 3 phase
Gas Connection:	50mm
Water Connection:	15mm
Flow Rate:	19.61kg/s and 117kPA
Dimensions (LxWxH):	3030 x 2428 x 2599mm
Weight:	3.5 tonnes (approx.)
Pressurisation Plant:	Included (500L expansion)
Telemetry:	Trend IQ3 controller with GSM modem reporting
Variable Temperature:	Yes
Noise:	75 dBA
Handling Options:	HIAB
HWS Connection:	DN40
HWS Flow Rate:	1 Kg/s
Max HWS Temperature:	60°C
Maximum Static:	6 BAR
CWS Connection:	DN40

Bespoke options are available - call us today!