

24
HOURS
7 DAYS A WEEK



250KW

Packaged Boiler Plant

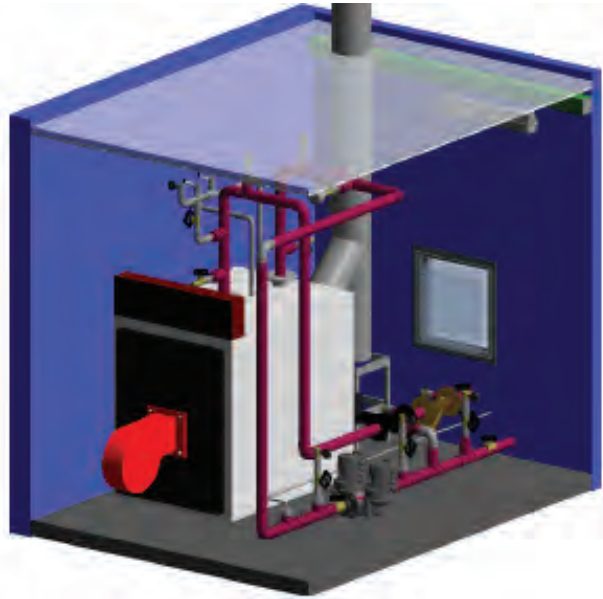
Specification Sheet



250KW

Packaged Boiler Plant

Specification Sheet



Maximum Output:	250kW Gas or Oil
Boiler:	Viessman
Burner:	Oil: Riello RL34 Gas: RS34
Pumps:	Grundfos Magna 65-120 (duty/standby) variable drive
Temperature Range:	60-90°C
LTHW Connections:	DN50
Electrical:	32 amp 1 phase
Gas Connection:	50mm
Water Connection:	15mm
Flow Rate:	4.86kg/s and 100kPA
Dimensions (LxWxH):	3030 x 2428 x 2599mm
Weight:	3.5 tonnes (approx.)
Pressurisation Plant:	15mm manual main full
Telemetry:	Trend IQ3 controller with GSM modem reporting
Variable Temperature:	Yes
Noise:	81 dBA
Handling Options:	HIAB
HWS Connection:	DN40
HWS Flow Rate:	1 Kg/s
Max HWS Temperature:	60°C
Maximum Static:	3Bar – max system volume 1500 litres (200 litre expansion vessel included)
CWS Connection:	DN40

Bespoke options are available - call us today!